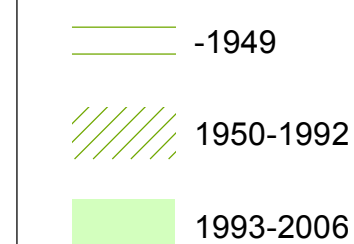


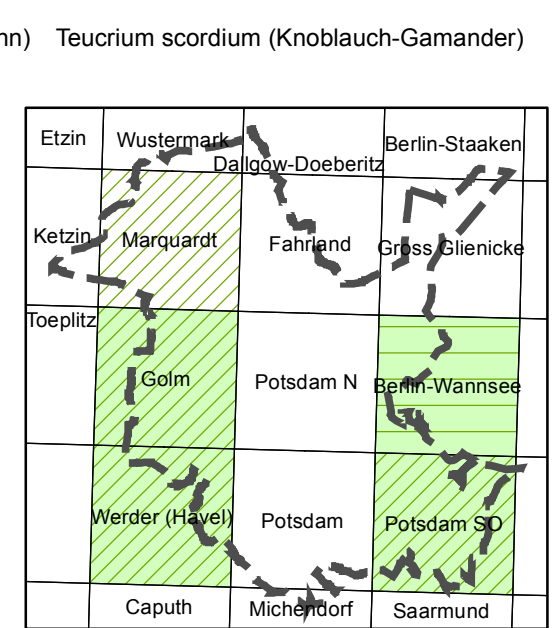
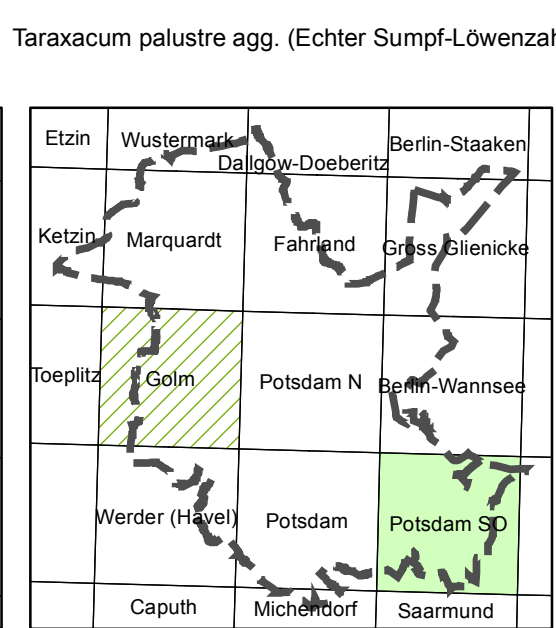
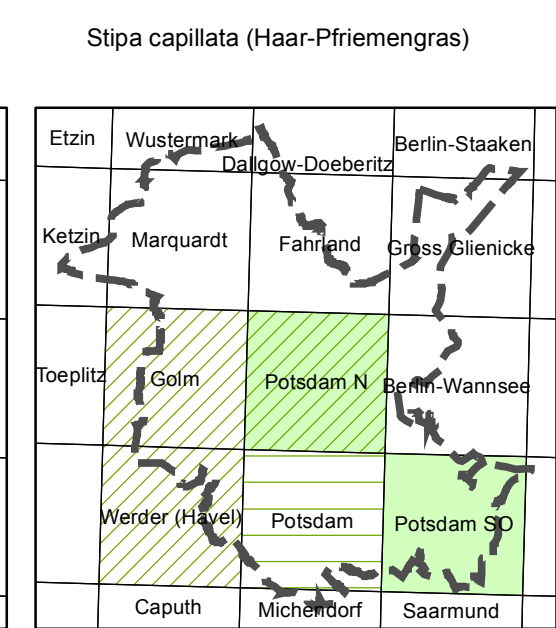
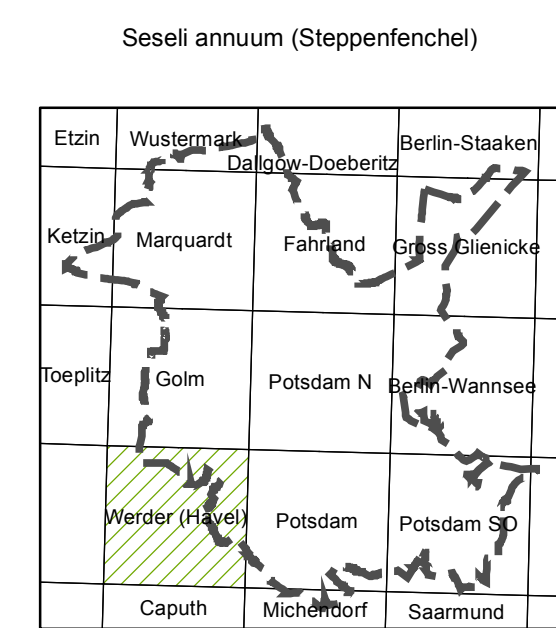
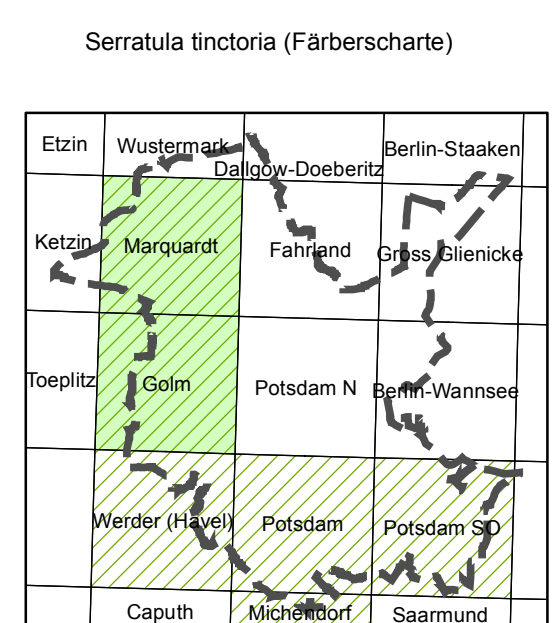
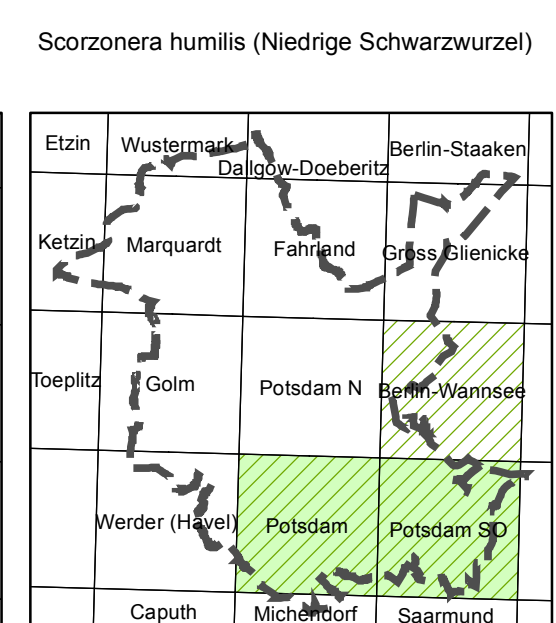
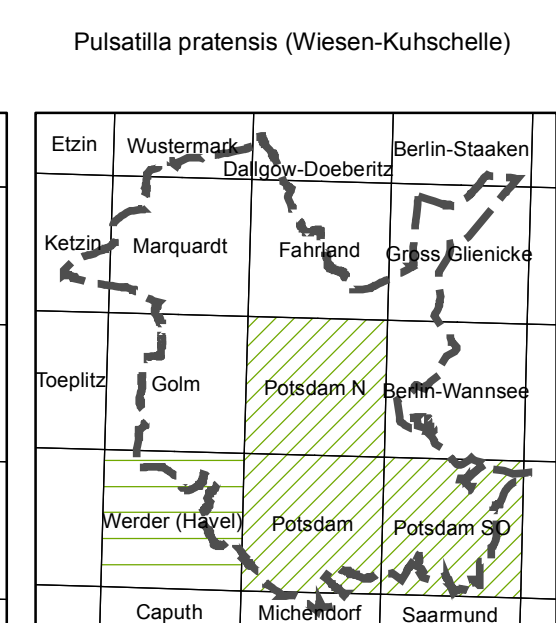
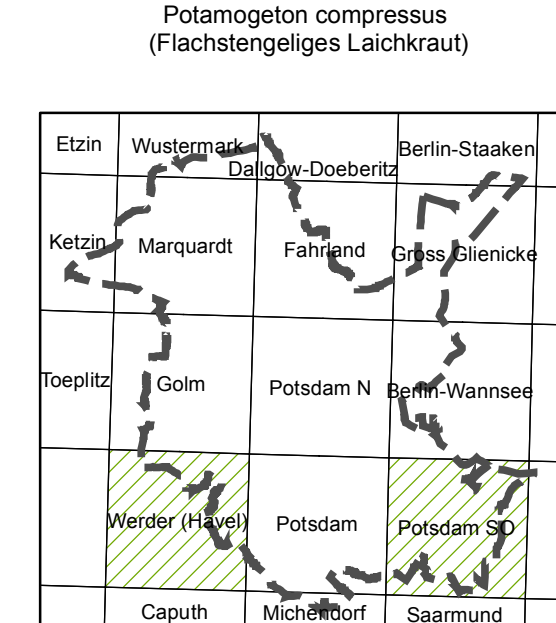
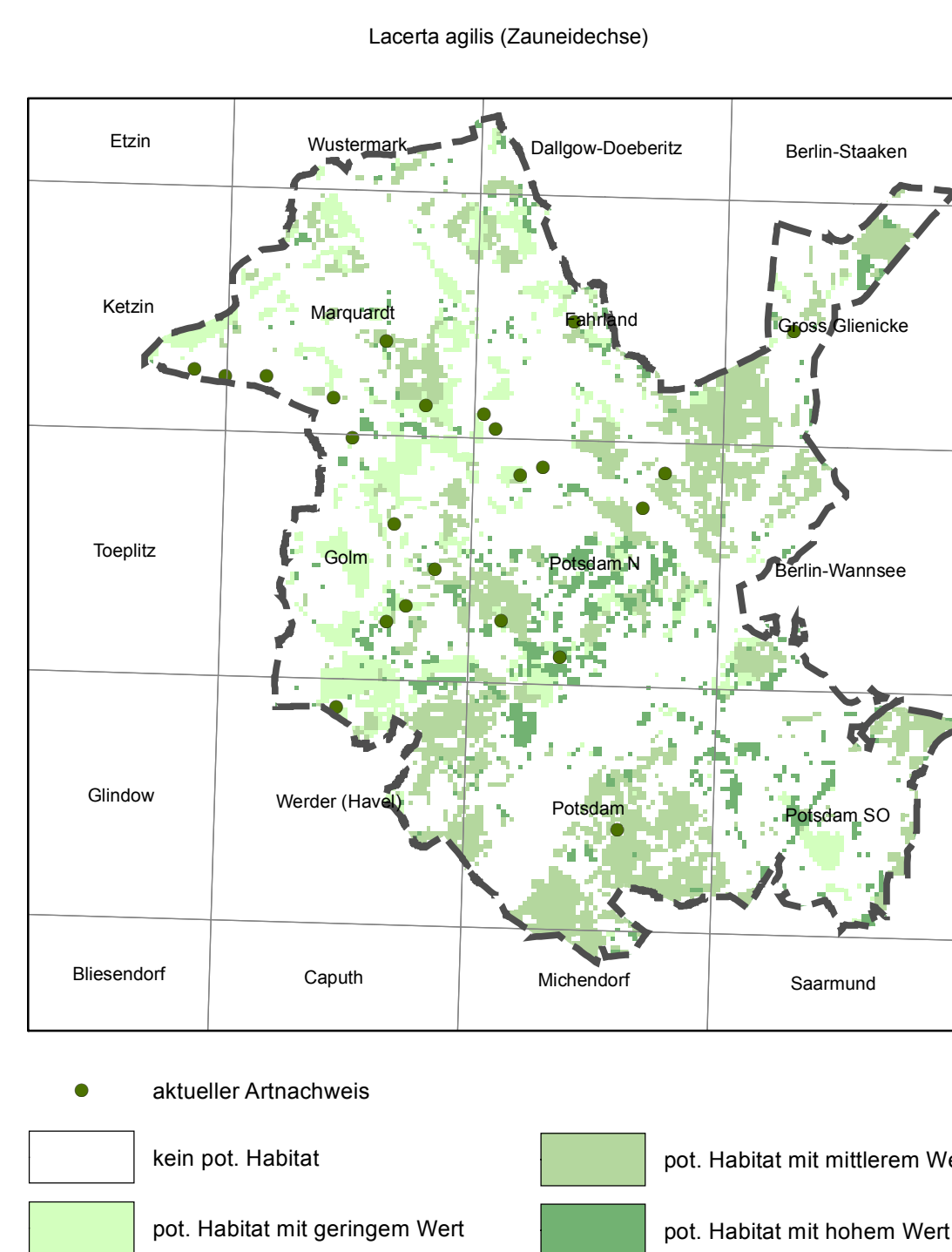
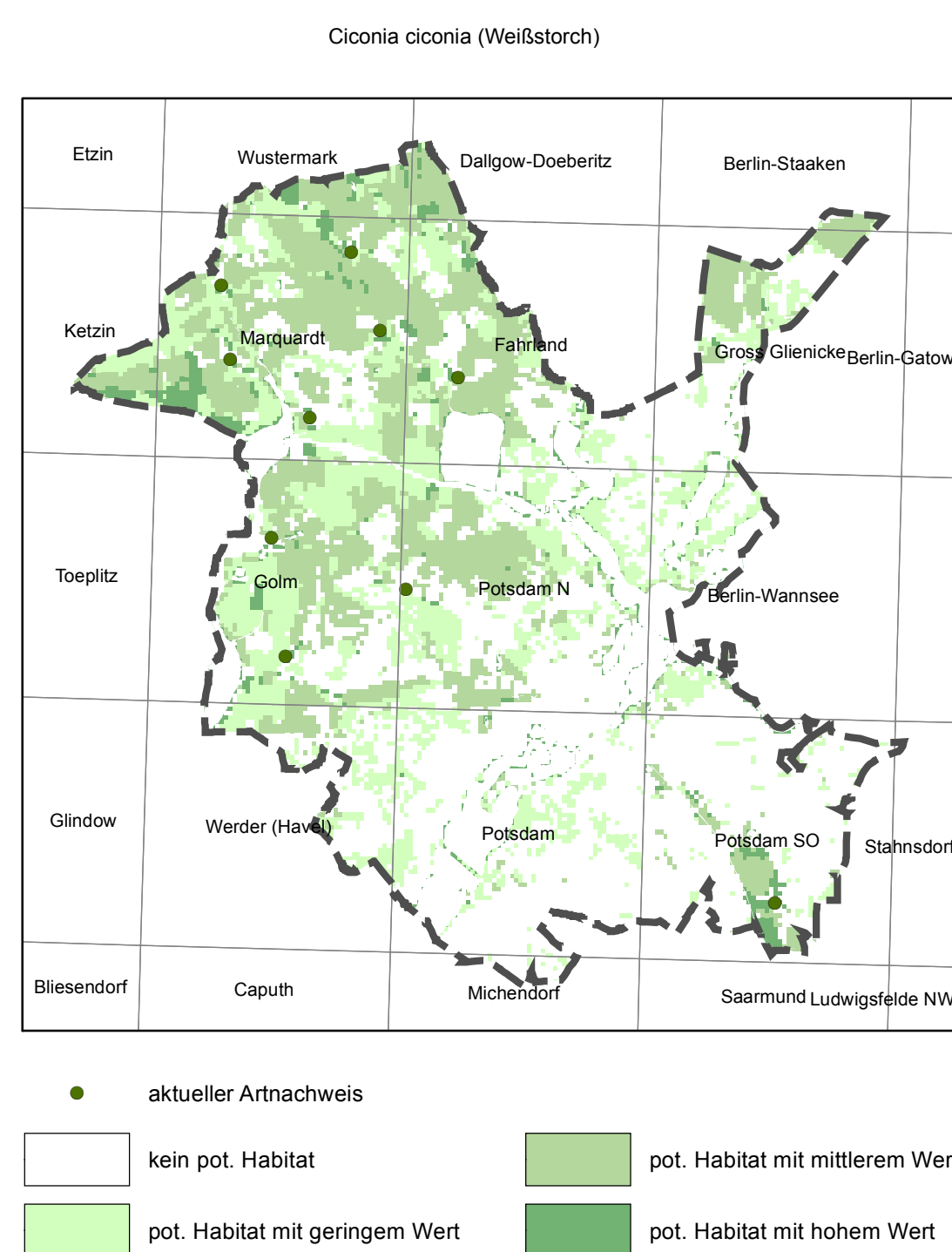
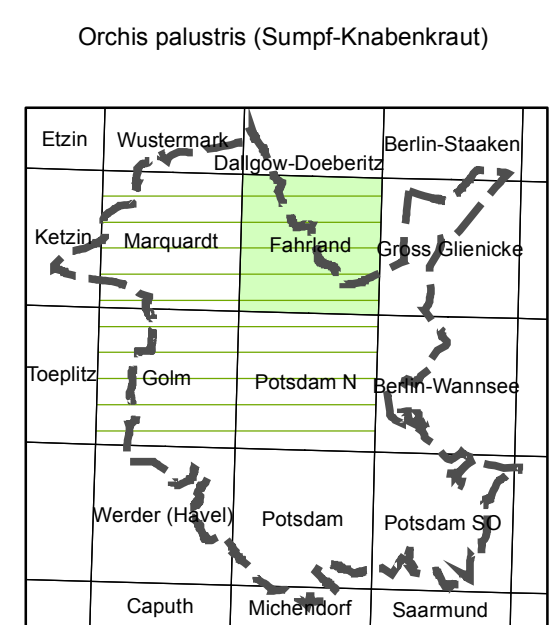
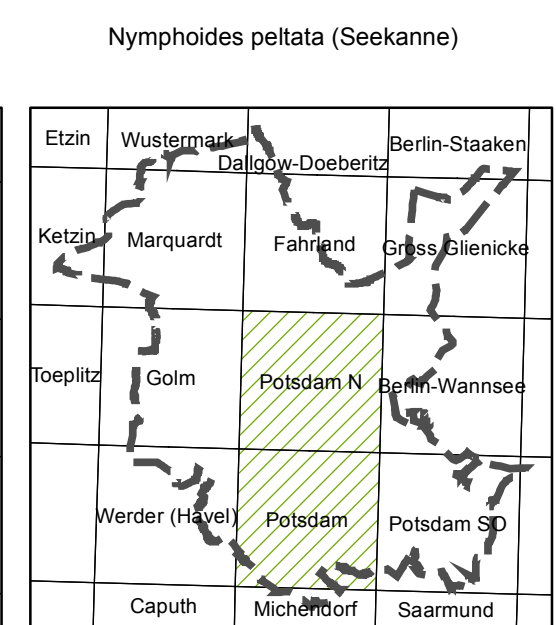
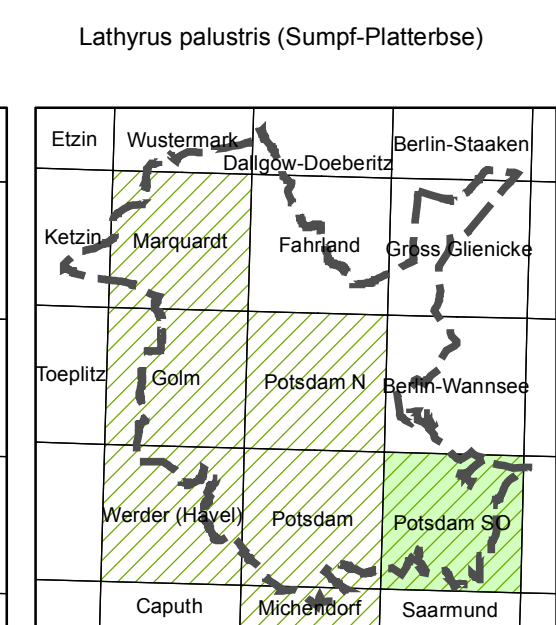
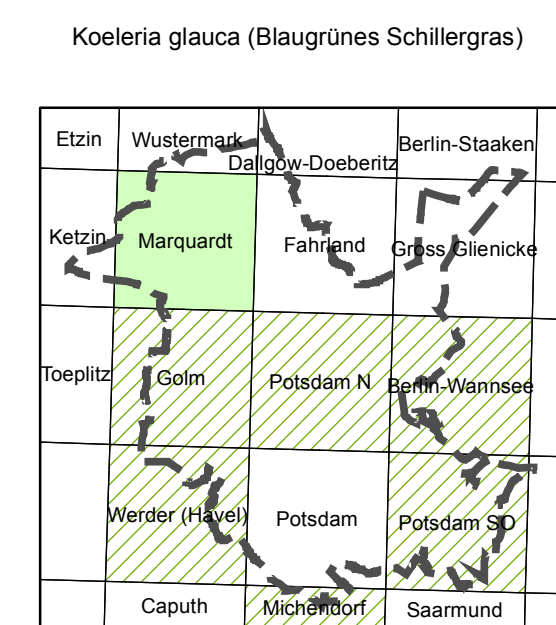
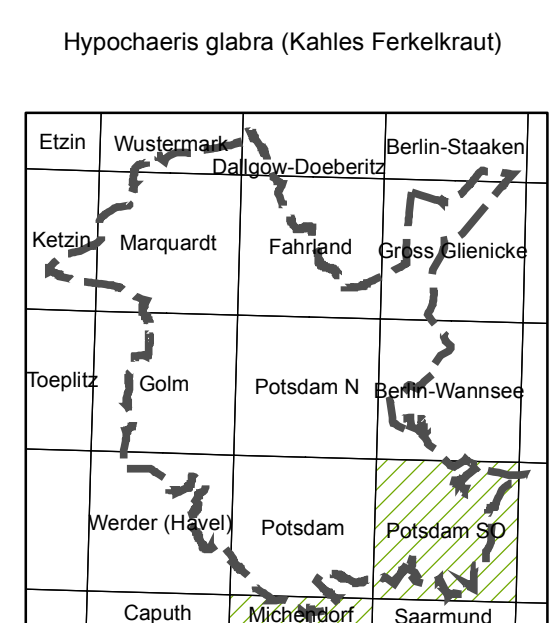
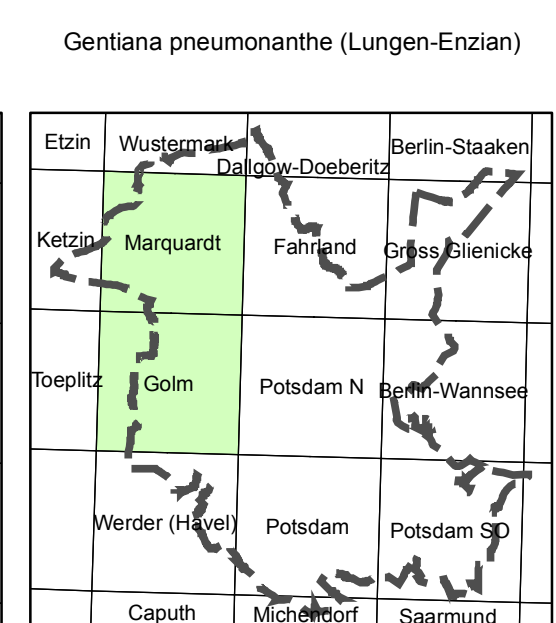
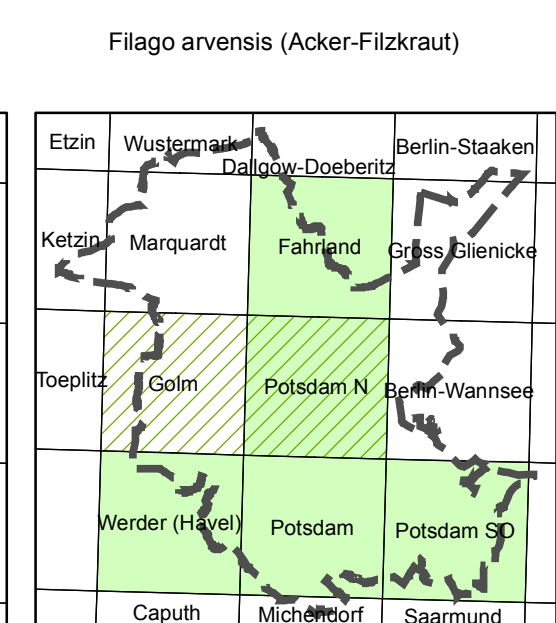
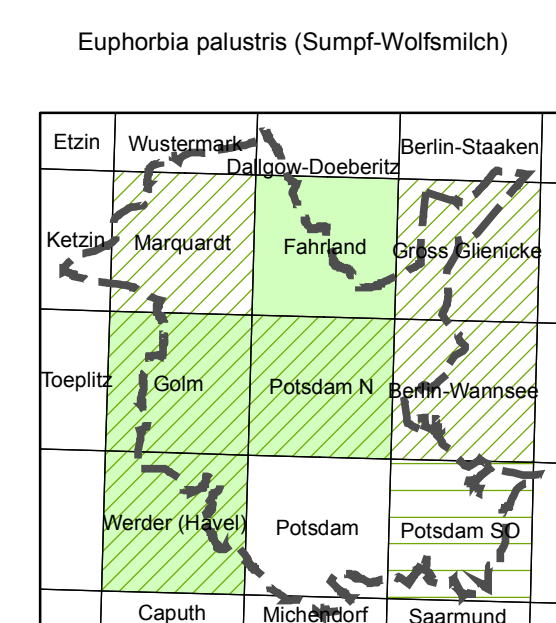
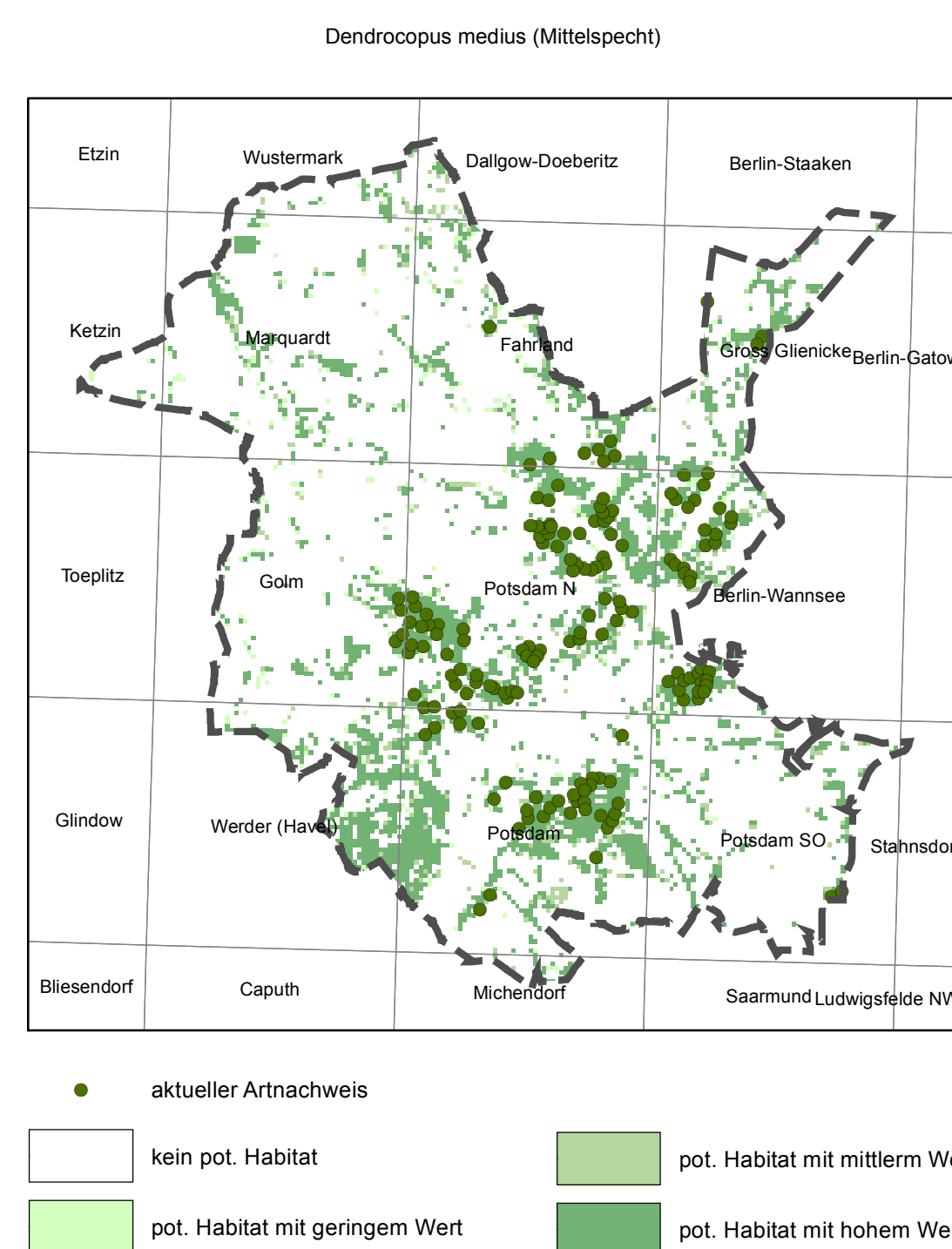
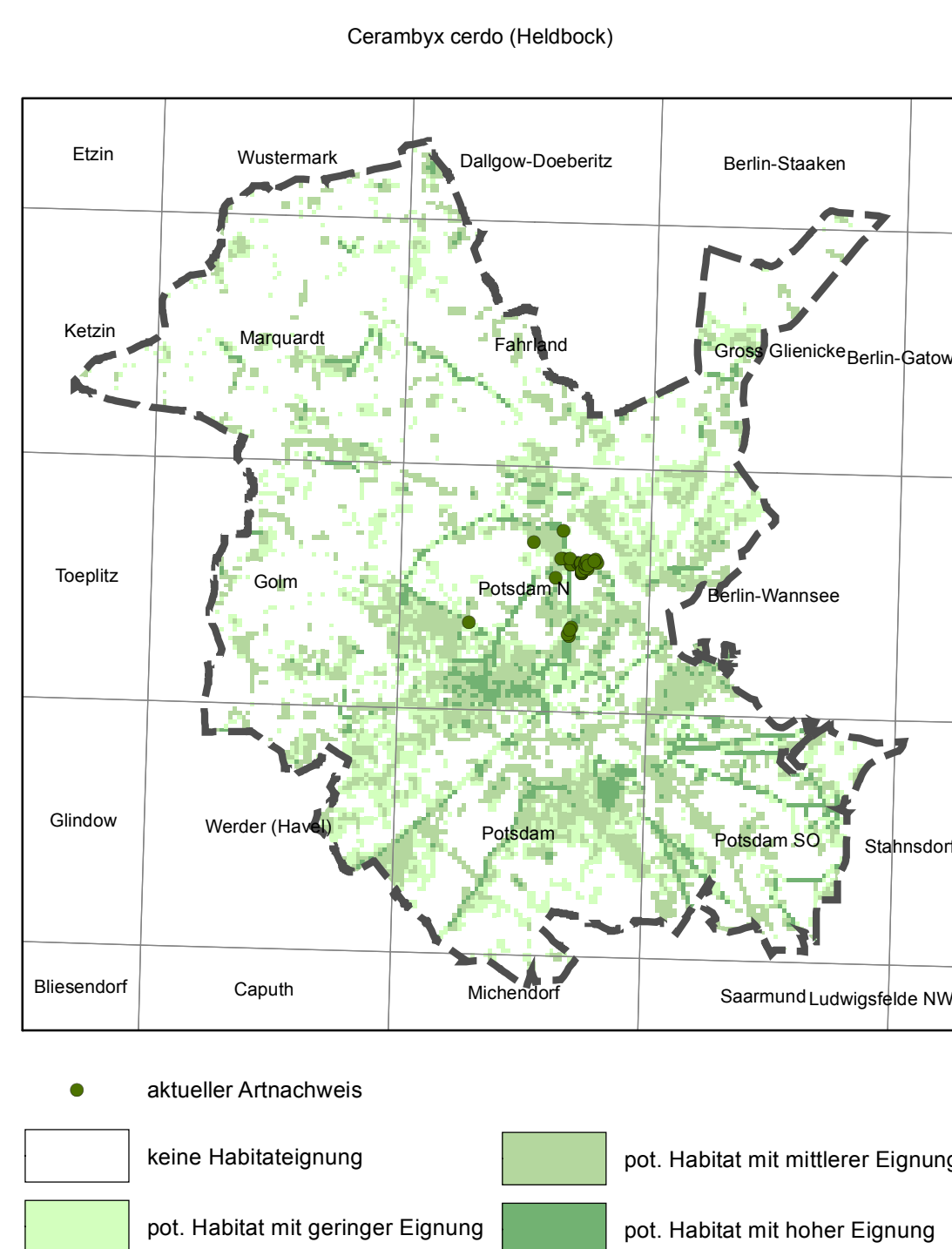
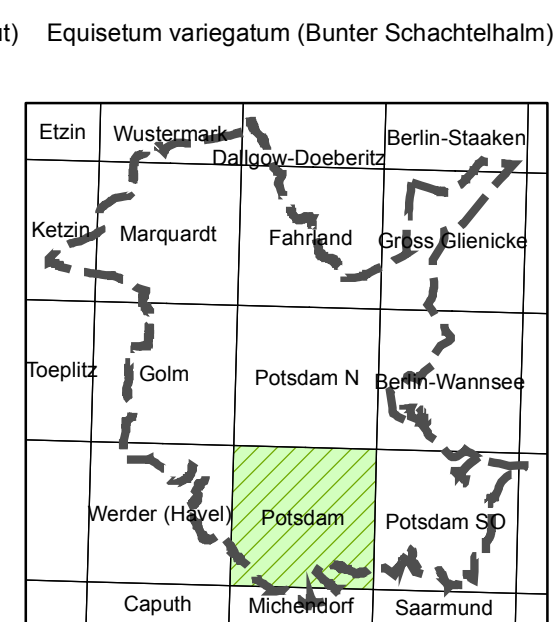
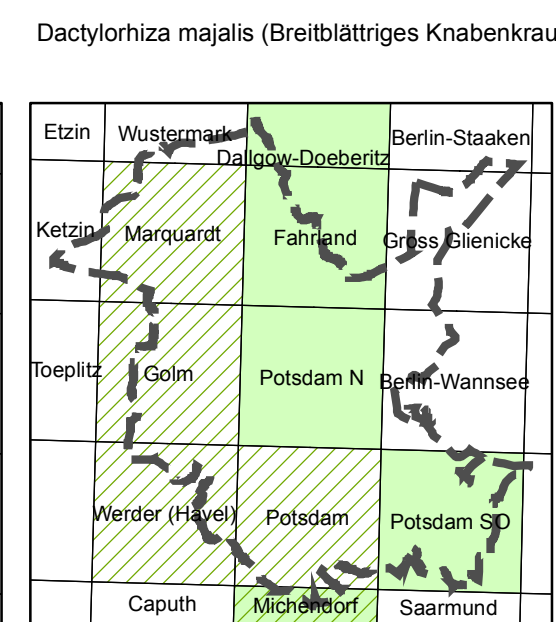
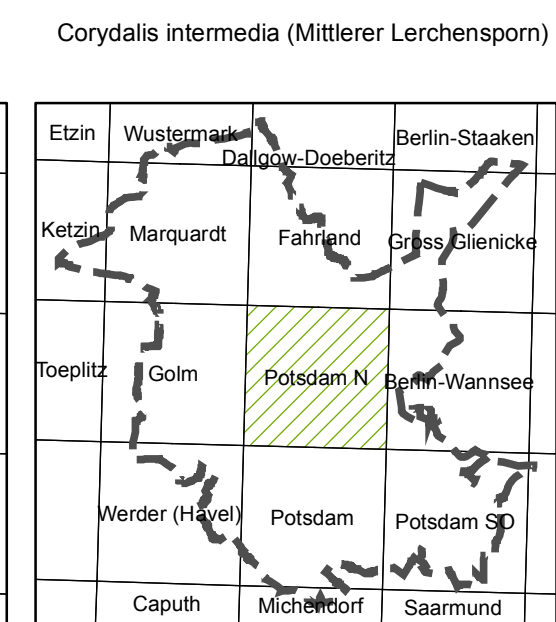
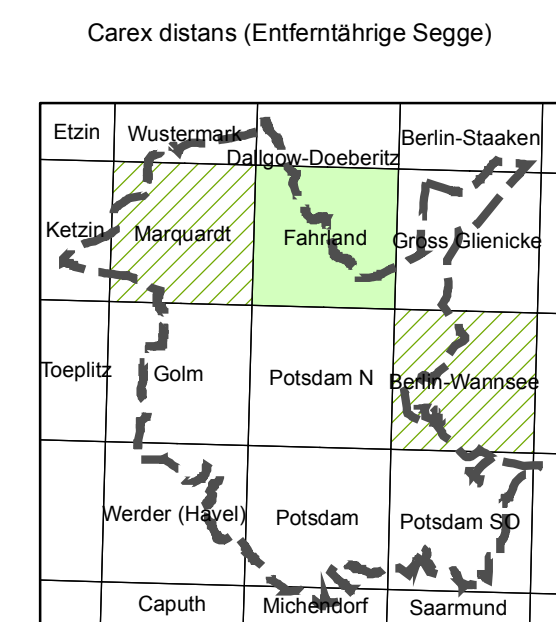
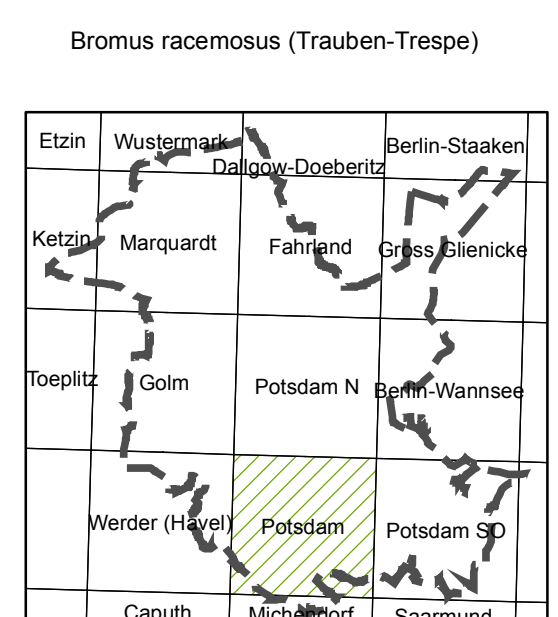
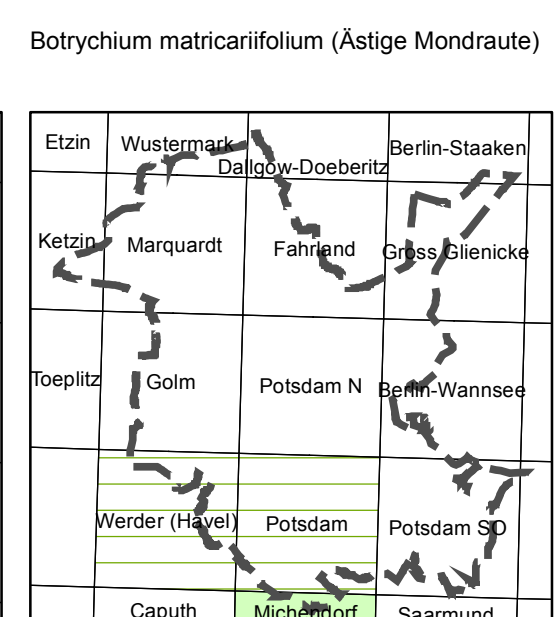
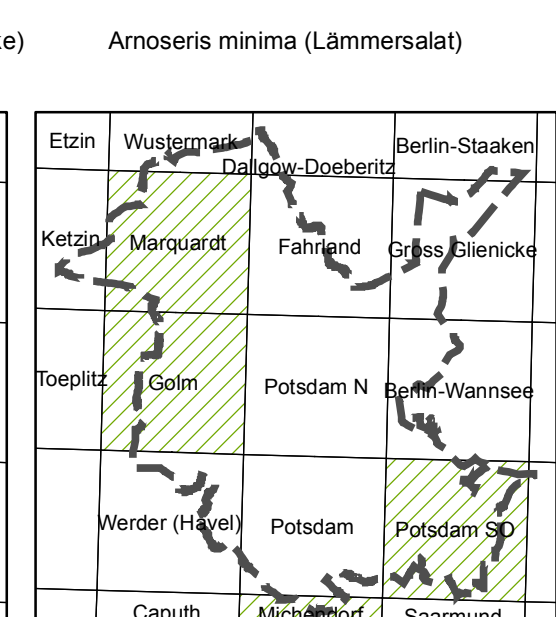
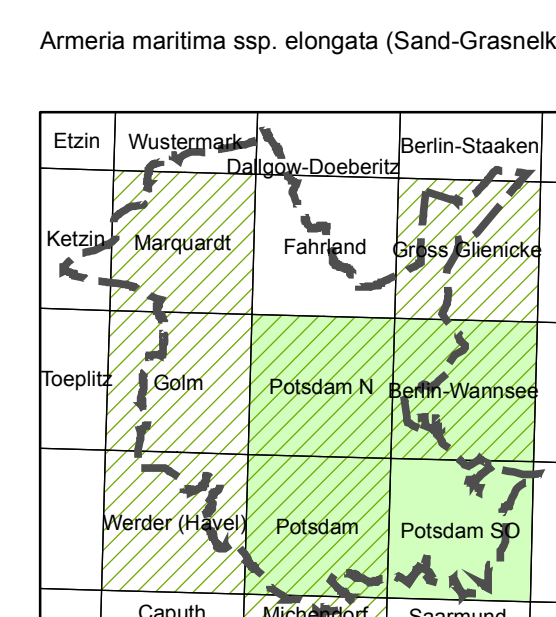
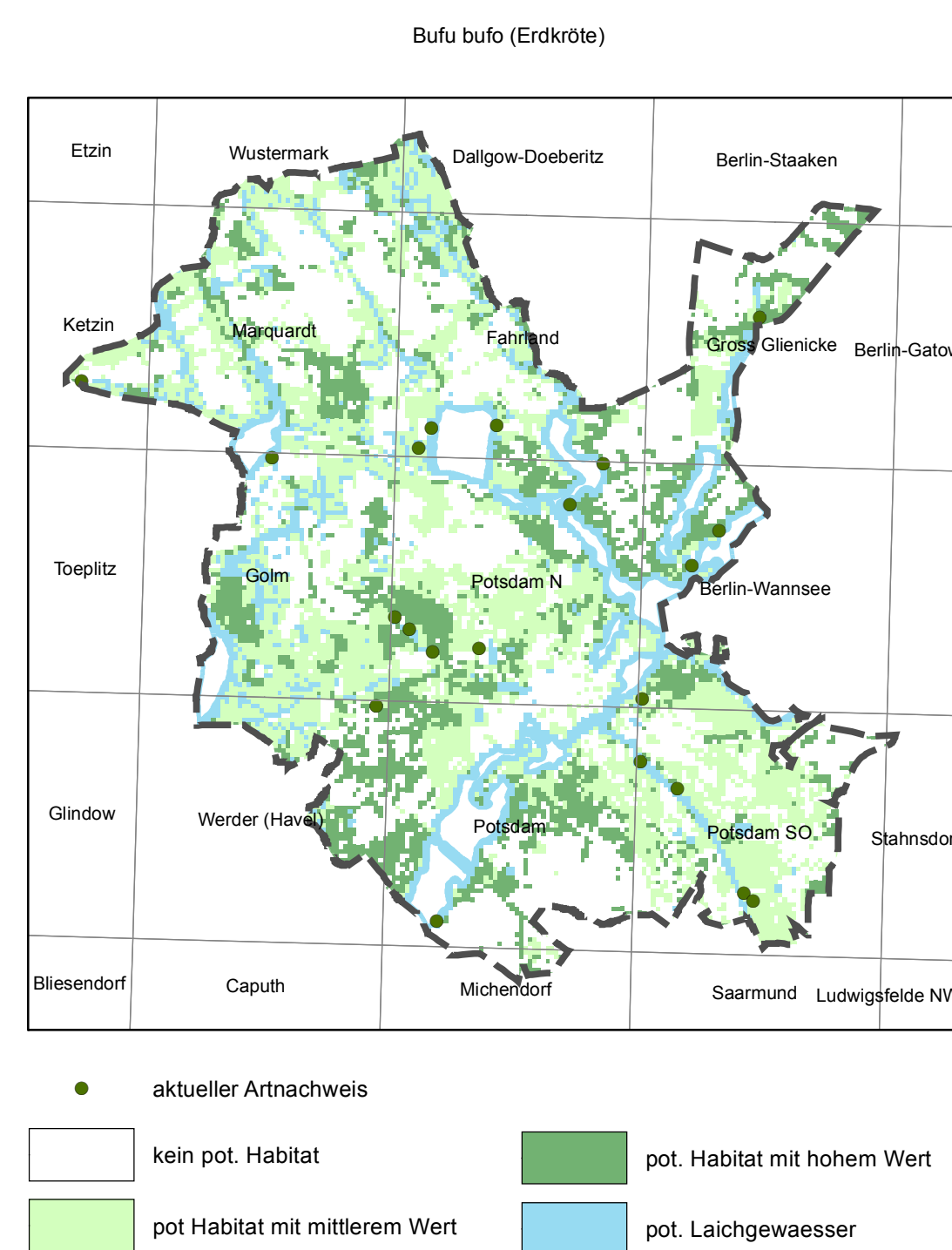
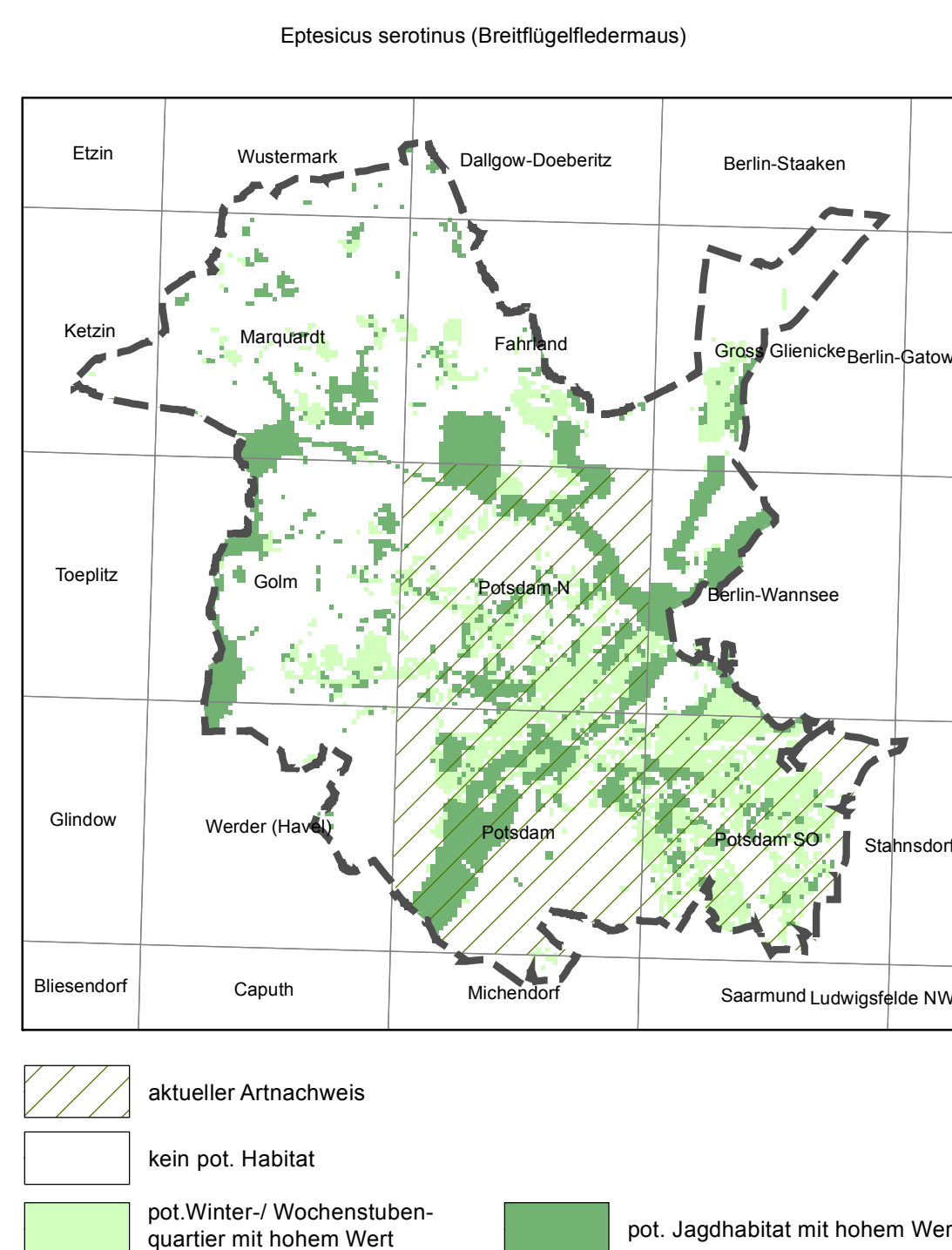
# Landschaftsplan

## K3.2 - Flora / Fauna

### Artnachweise Flora



Stadtgrenze Potsdam



Quellen: Fürstenow, Jörg (Sielmanns Naturlandschaft Döberitzer Heide GmbH), Mitt. 2006

Kummer, Volker (Universität Potsdam, Institut für Biochemie und Biologie, LS Spezielle Botanik), Mitt. 2006

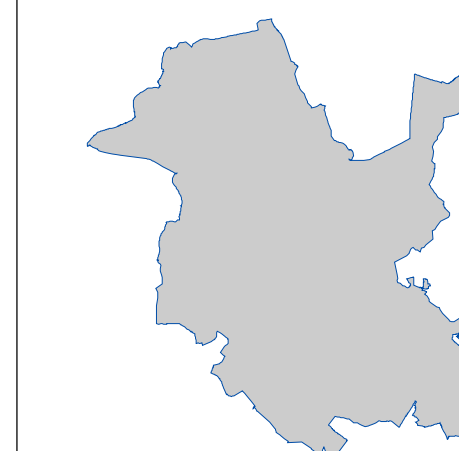
Scheffler, Ingo (Universität Potsdam, Institut für Biochemie und Biologie, FB Allgemeine Zoologie), gutachterliche Untersuchungen 1996 bis 2006

L.U.P.O., Gesellschaft für angewandte Landschaftsökologie und Umweltplanung Dr. Ott mbH, Friedhofstr. 28, 67705 Trippstadt

Landesumweltamt Brandenburg Ref. RW 7; Ö 2, Naturschutzstation Zippelsförde, 2005, 2006

Selektive Biotopkartierung: Luftbild und Planung GmbH, 2002 Plan-Faktor, Berlin, 2005

eigene Auswertung von Artenschutzbeiträgen zu Bauleitplan- und Planfeststellungsverfahren



### Landschaftsplan

Fachbereich Stadtplanung und Stadterneuerung  
Bereich Stadtentwicklung - Verkehrsentwicklung  
14461 Potsdam  
E-Mail: Stadtentwicklung@Rathaus.Potsdam.de  
www.potsdam.de/stadtentwicklung

Stand: 19.09.2012