



Feels like

Potsdam



United Nations
Educational, Scientific and
Cultural Organization



Palaces and Parks
of Potsdam and Berlin
World Heritage Site since 1990



Film and Media City



Filmmuseum Potsdam

Rich in tradition, the film studios have developed into a modern media and high-tech centre. The film location of stars like Marlene Dietrich today produces national as well as international motion pictures – prize winners in Berlin, Cannes, and Hollywood. The public FILMPARK Babelsberg is a magnet for visitors with its volcano stunt show, action cinema, film nights, adding new exciting attractions every year. The impressive building of the Academy for Film and Television within the studio complex marks the future of the media location Potsdam. In the historical Marstall, the Filmmuseum Potsdam presents interesting exhibitions, particularly on German film history.

Actress Marlene Dietrich and director Volker Schöndorff



Academy for Film and Television Konrad Wolf



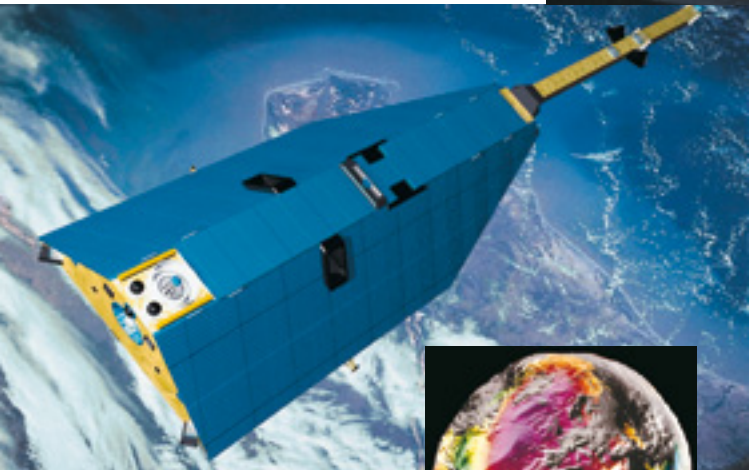
Metropolis Hall and FILMPARK Babelsberg



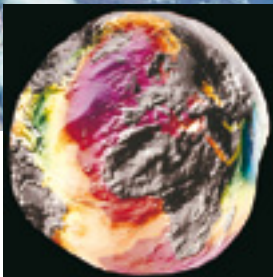
City of Science



Einstein Tower



Research satellite Champ



Earth gravity model Potsdamer Kartoffel



Albert Einstein Science Park



Goim Science Park



Exploratorium Potsdam

Potsdam has been making science history since the 19th century. Universities as well as non-academic institutions give Potsdam its profile as a city of science, where science institutions flourish side by side with research, technology, education and culture in a spirit of cooperation and collaboration. The research satellite “Champ” of the German Research Centre for Geosciences Potsdam sends its scientific data around the world. Students highly appreciate the University of Potsdam, the Academy for Film and Television, and the University of Applied Sciences. Visitors can experience science in different locations in the city. Examples are the Albert Einstein Science Park with its prominent Einstein Tower, the Biosphere, the planetarium, or the science centre Exploratorium Potsdam for young scientists.

Arcadia in Potsdam

Don Juan performance at Hans Otto Theatre (photo: Hans-Ludwig Böhmer)



Cecilienhof Palace – historic site of the Potsdam Conference



New Palace Theatre (photo: Michael Trippel / Potsdam-Sanssouci Music Festival)



Reading in Raffaelsaal at Orangery Palace (photo: Potsdam-Sanssouci Court Concerts/Reiche)



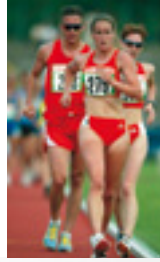
Nikolai Concert Hall (photo: PNN / Manfred Thomas)

Potsdam is the ideal city for meetings and conferences. There are many modern hotels in attractive locations to choose from. The various historic city ensembles, the palaces, parks, and gardens are well worth the visit. Cultural highlights of the season include the Musikfestspiele Potsdam Sanssouci, the Potsdamer Hofkonzerte Sanssouci, classical performances in the New Palace Theatre, and many open air concerts in historic settings. The Nikolai Concert Hall, the humorous cabaret Obelisk, the culture and business district Schiffbauergasse with its diverse alternative scene around the prestigious Hans Otto Theatre, all shape the cultural diversity of the city. From palace nights to film nights, from salsa dance and music to festivals of lights – there are many possibilities to frame your very own “Potsdam Conference”.

Chamber opera at New Palace Theatre (photo: ZB Fotoagentur Zentralbild / Potsdam-Sanssouci Music Festival)



City of Sport



A great enthusiasm for sports shapes the city. More than a hundred sports clubs offer the full range from senior to serious. Olympic champions, European and even world champions represent the state capital. Rowing, canoeing, track and field, swimming, women's football, and even bobsleigh teams are very successful on a national and international level. Running events such as the annual Schössermarathon and Preußische Meile, or the canoe event Kanalsprint attract many athletic guests. With a new multi-purpose hall for 2'000 spectators, the 20 hectare sports park Luftschiffhafen is now even more suitable for leisure and serious sport activities.



Sports park Luftschiffhafen at Templiner See



Brandenburg Impressions



Church of the Redeemer in Potsdam-Sacrow



Havel steamship



Outing in Mark Brandenburg

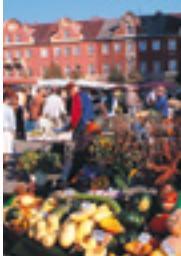


Blooming trees in Havelland

Starting in Potsdam, the Mark Brandenburg presents itself in all its diversity. As its dynamically growing capital with more than 150'000 inhabitants, Potsdam is the spiritual, cultural and political centre of the region. At the same time, the city is tightly linked to the surrounding state of Brandenburg in the fields of business, science, culture, education, and sports. Potsdam is the starting point of many boat and bike tours along lakes and rivers, to palaces and gardens, through idyllic villages with ancient churches, mansions and monuments. The Havel landscape is ideal for relaxing boat holidays. The 31 cities under the umbrella brand "Historic city centres in the State of Brandenburg" are well worth a visit.

Downtown Shopping

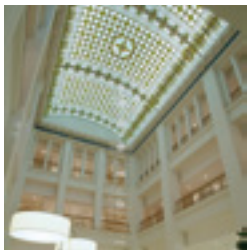
Market at city square Bassinplatz



Pedestrian street Brandenburger Straße



Nauen Gate



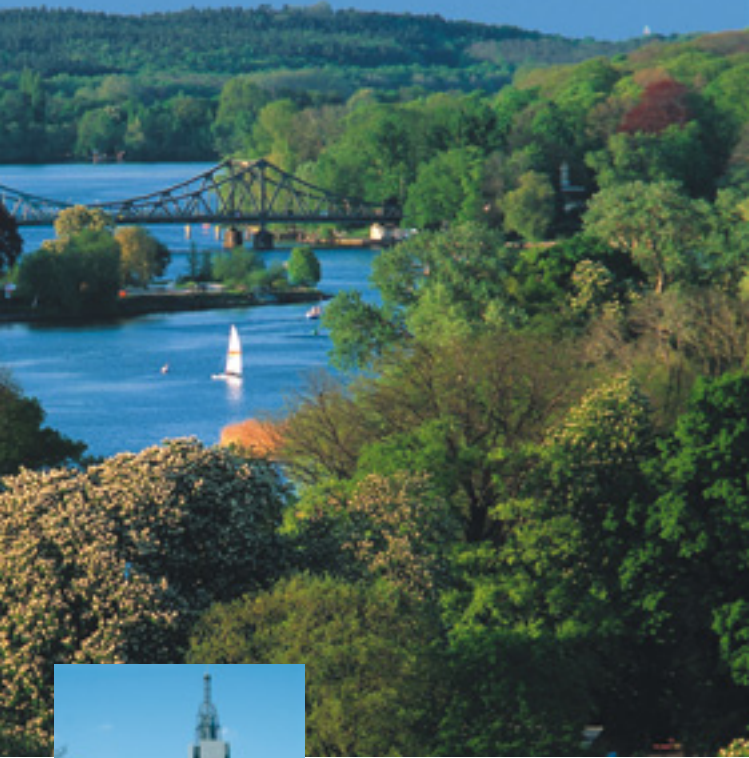
Atrium of shopping centre Stadtpalais



Babelsberg shopping centre

A shopping stroll through the historical city centre of Potsdam has a unique appeal. Lively street cafés, elegant boutiques, art and antique shops, and imaginative restaurants make for an inspiring shopping experience. Visitor magnets in the Dutch Quarter are the tulip festival in spring and the potter market in autumn. The Potsdam Museum and the Museum of Natural Science also hold out interesting experiences for visitors. The reconstructed historical city centre of the district Babelsberg surrounds the former town hall at just a few minutes walking distance from Babelsberg Park. Here, you will find well-managed speciality shops, boutiques and a diverse restaurant scene. On the city square Weberplatz, a Bohemian weavers' festival and a Bohemian Christmas market add an entertaining, historical touch to the district. Visit the popular weekly market in front of Friedrich Church on Saturdays.

Potsdam by the Water



Glienicke Bridge



Senior Residence Heilig Geist Park
at Havel River

The picturesque island of Potsdam lies amidst the vast Havel landscape, neighbouring the vibrant metropolis Berlin. Its historic city centre, palaces, and gardens have been included in the UNESCO World Heritage list as a magnificent work of art. You can best experience the charming locations during a boat tour on the lakes of the Havel – a true paradise for water sports.

Tolerant and International



Nauen Gate in the city centre

Experience history in Potsdam! In 1785 the Tolerance Edict of Potsdam was established by Elector Friedrich Wilhelm von Brandenburg, opening the march Brandenburg to settlers from all over Europe. The Dutch Quarter, the Russian Colony Alexandrowka, the Bohemian Weaver's Quarter, the Swiss Village Nattwerder, and the many churches and Italian style villas lend the historic city an international air.

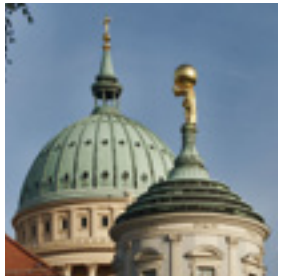


Tulip Festival in the Dutch Quarter



HISTORIC HIGHLIGHTS OF GERMANY

Steam Engine Building "Mosque" in the Havel bay



St. Nicholas Church and old town hall at the old market square



Friedrich Church in the Weaver's Quarter in Babelsberg

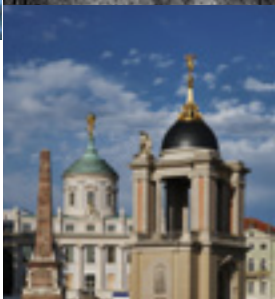
Historic City Centre



Historic city centres in the
State of Brandenburg



Former City Palace



Fortuna Portal and old town hall Altes Rathaus



The old city canal



The restored city canal



House of Brandenburg-Prussian History

Potsdam originally developed outwards from the old market, the site of the city palace, which was bombed in World War II and blasted in post-war Germany. In the upcoming years, the Landtag of Brandenburg will be constructed here, using historical plans for its façade. Its entrance gate Fortuna Portal has already been rebuilt. The partially re-excavated city canal, the House of Brandenburg-Prussian History at the reconstructed new market square, the leisure park Neuer Lustgarten at the piers of steamship company Weisse Flotte, all rejuvenate the heart of the city, filling it with life.



Chinese House at Sanssouci Park

Palaces and

Frederick the Great



Charlottenhof Palace

The famous palaces and gardens of Potsdam are treasures of a cultural landscape, which has developed over three centuries. The annual palaces by night event Schössernacht and the music festival Musikfestspiele are highlights in the cultural calendar.

Sanssouci Park

Frederick the Great commissioned his architect Knobelsdorff to build Sanssouci Palace from 1745 to 1747 as his summer residence, a place where he could live according to his own taste. The park area developed over a period of a hundred years and constantly provided new sights of prestigious ensembles such as the New Palace or fancy treasures such as the Chinese House. Garden architect Lenné shaped parts of the park into an English landscape garden, which also features Italian elements such as the Roman Baths and Charlottenhof Palace by Schinkel. The Klausberg Belvedere and the antique scenery of the historic ensemble Ruinenberg are accessible to visitors after expansive reconstruction.



Sanssouci Palace



New Palace at Sanssouci Park

gardens



United Nations
Educational, Scientific and
Cultural Organization



Palaces and Parks
of Potsdam and Berlin
World Heritage Site since 1990

Marble Palace in the New Garden



Cecilienhof Palace



Flatow Tower

New Garden

At the end of the 18th century, the neo-classical Marble Palace was constructed in the idyllic New Garden on the lake Heiliger See under King Friedrich Wilhelm II. Emperor Wilhelm II later built the last Hohenzollern residence, Cecilienhof Palace, for his crown prince. Here, in 1945, the heads of the allied states set the course for German and European post-war development with the famous Potsdam Agreement.

Babelsberg Park

Outstanding landscape designers and architects, such as Lenné, Pückler-Muskau, Schinkel, and Persius created a comprehensive work of art of exceptional beauty. The view axes laid out by Lenné in the romantic park on the Havel have been restored.

The neogothic Babelsberg Palace, former summer residence of Emperor Wilhelm I, offers attractive views of Flatow Tower and Glienicke Bridge. Before the fall of the Berlin Wall in 1989, this bridge between Potsdam and Berlin symbolised the division of Europe.



Babelsberg Palace

New Impulses for Potsdam

The new Hans Otto Theatre



The 2001 national garden show triggered a powerful surge in the city's development. Former military grounds were transformed into a public park. The Volkspark offers attractive opportunities for sports, recreational and cultural activities and allows visitors to experience the fascinating tropical botanic garden in the Biosphere. The scenic island Freundschaftsinsel, originally designed by Karl Foerster, and other new locations by the river invite guests to enjoy long walks along the banks of the Havel. The fields of the Feldflur were reconstructed using the ingenious landscape designer Lenné's historical plans. The area now offers attractive opportunities for recreation. Many historic ensembles, such as the Crown Estate Bornstedt, were rebuilt and make walking or bike tours through the city a wonderful experience. The panoramic view from the observation towers of Pfingstberg Belvedere is a genuine highlight. The culture and business quarter Schiffbauergasse has developed a profile that is rich in contrast. The new theatre, the restored historical buildings, and interesting new architectural solutions of international corporations Oracle and VW design centre frame the stage for a vibrant cultural and economic scene in Potsdam.



Pfingstberg Belvedere



Crown Estate Bornstedt



Biosphere at public Volkspark



Service:

Tourist Information in the Potsdam Main Station
Tourist Information Potsdam
Brandenburger Straße 3
D-14467 Potsdam
phone +49 (0) 331 - 27 55 8-0
fax +49 (0) 331 - 27 55 8-29
email: tourismus-service@potsdam.de
www.potsdamtourismus.de

Rediscover Potsdam...



... with the electronic city guide itour. The gadgets are available at Potsdam Tourism Service, in the House of Brandenburg-Prussian History and in various hotels.



... with your mobile phone. You can access information on 23 sights at public transport stops and other locations. Or download the data onto your MP3 player in advance at www.potsdam.tomis.mobi (consider roaming fees!).



www.potsdam.de

Publisher and editing

State Capital Potsdam
The Mayor's Office, Marketing/Communications Department

Concept and Design

Design Concept Burkhard Baese

Photos

State Capital Potsdam
Ulf Böttcher (25), Michael Lüder (6),
Barbara Plate (2), Exploratorium Potsdam (1)
A. Stuth (1); Filmmuseum Berlin (1)
German Research Centre for Geosciences Potsdam (3)
Hans-Ludwig Böhmer (1)
Haveldampfschiffahrt Potsdam (1)
Karstadt (1), Medienpark Babelsberg (1)
Musikfestspiele Potsdam Sanssouci (2)
Nestor Bachmann dpa (1)
Potsdam-Museum (1)
Potsdamer Hofkonzerte Sanssouci (1)
PNN/Thomas (1), Studio Babelsberg (5)
Stadtkontor (1)
Stiftung Preußische Schlösser und
Gärten Berlin-Brandenburg (1)
Olaf Möldner (7), Manfred Hesener (4)
Jürgen Schönbrunn (1)
Karl-Heinz Hesener (1)
G. Hoffmann (1), Jürgen Strauss (1)

Copy deadline: 04/2010